



D R A K E





DRAKE

Location:
508 4th Street
San Francisco, CA 94107

Phone:
415-999-4291

Website:
www.drakesf.com

Email:
info@drakesf.com

Opening Year:
2013

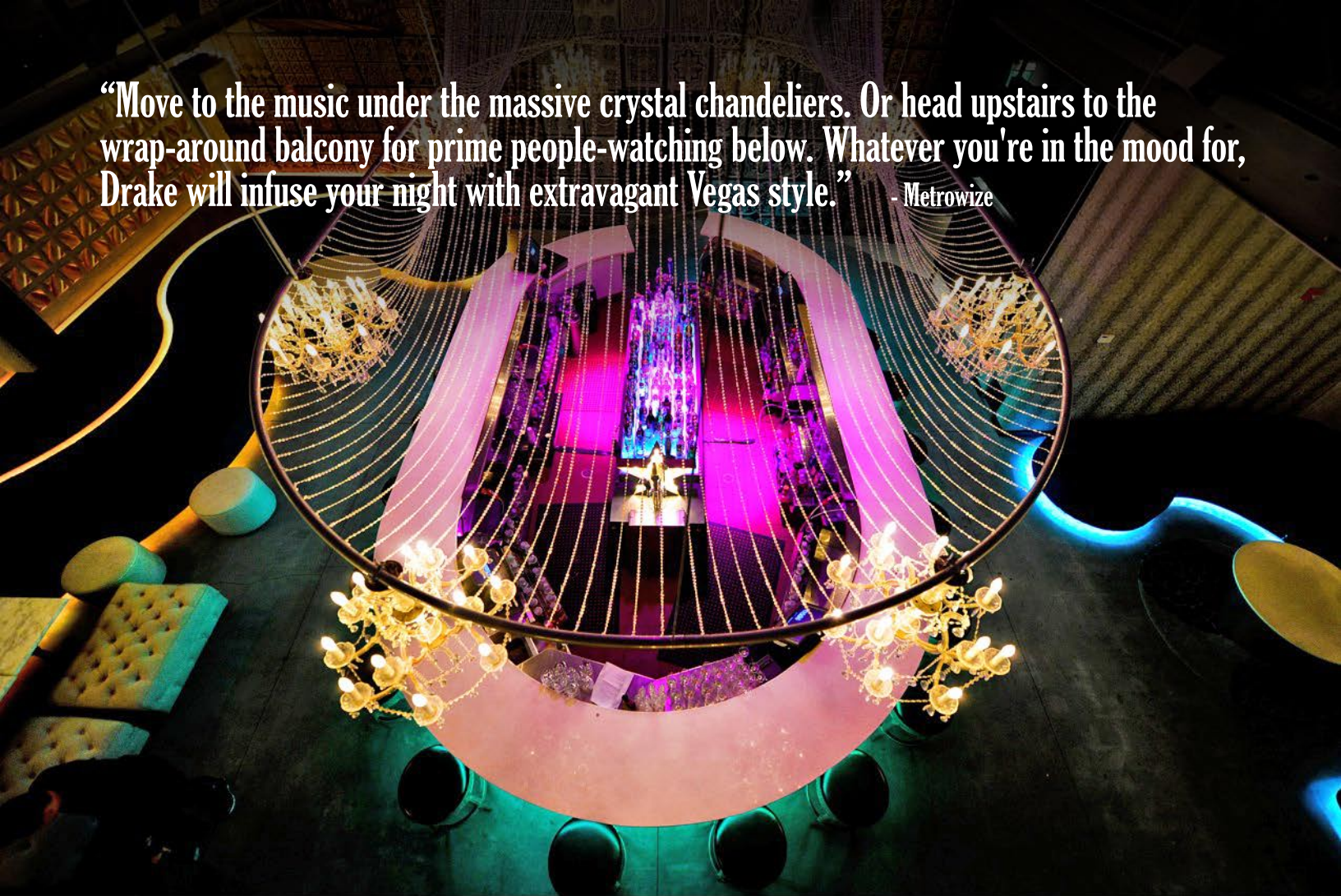
Capacity / Facility:
Two levels featuring 2 bars,
a private area, full size kitchen,
and plenty of unisex restrooms.

Dimensions:
9,900 Sq. Feet

Profile/Setting:
Located in the South of Market
District in San Francisco, minutes
from the Financial District and blocks
away from the Moscone Center.



“Move to the music under the massive crystal chandeliers. Or head upstairs to the wrap-around balcony for prime people-watching below. Whatever you're in the mood for, Drake will infuse your night with extravagant Vegas style.” - Metrowize



Drake offers our customers a dining, cocktails and lounge experience inside a sophisticated, Vegas-inspired space that features a chandelier-adorned first floor with a two story chandelier centerpiece resting above a magnificent wrap-around bar, surrounded by plush tufted benches and booths. Our second floor features more intimate sectionals, mirrored coffee tables, and a birdcage chandelier, as well as a glass banister that allows guests to check out the scene downstairs. Our versatile 9,900 square foot building additionally boasts two full service kitchens and a restaurant team that can cater your private event. Whether you're organizing a product launch, planning the ultimate holiday party, celebrating company milestones or throwing a surprise birthday, our space welcomes your guests and our event team will remove as much of the event planning stress as possible. Let our staff work with you to personalize an evening and accommodate your special needs.

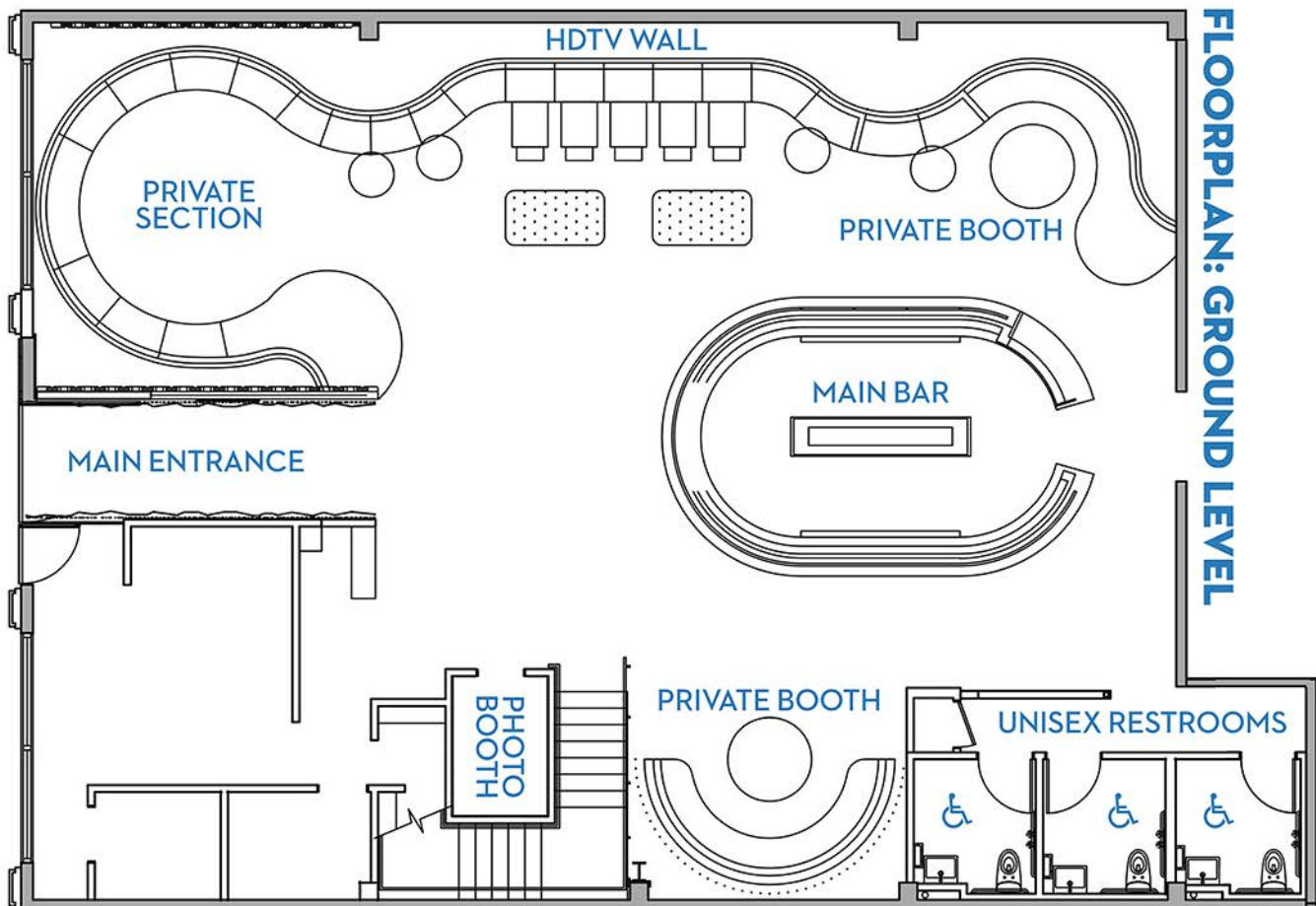


EVENT TYPES

**Bridal Showers • Concerts • Holiday Parties • Fashion Shows • Corporate Events
Video Production • Product Launches • Dining Events • Photoshoots • Fundraisers**

GROUND LEVEL

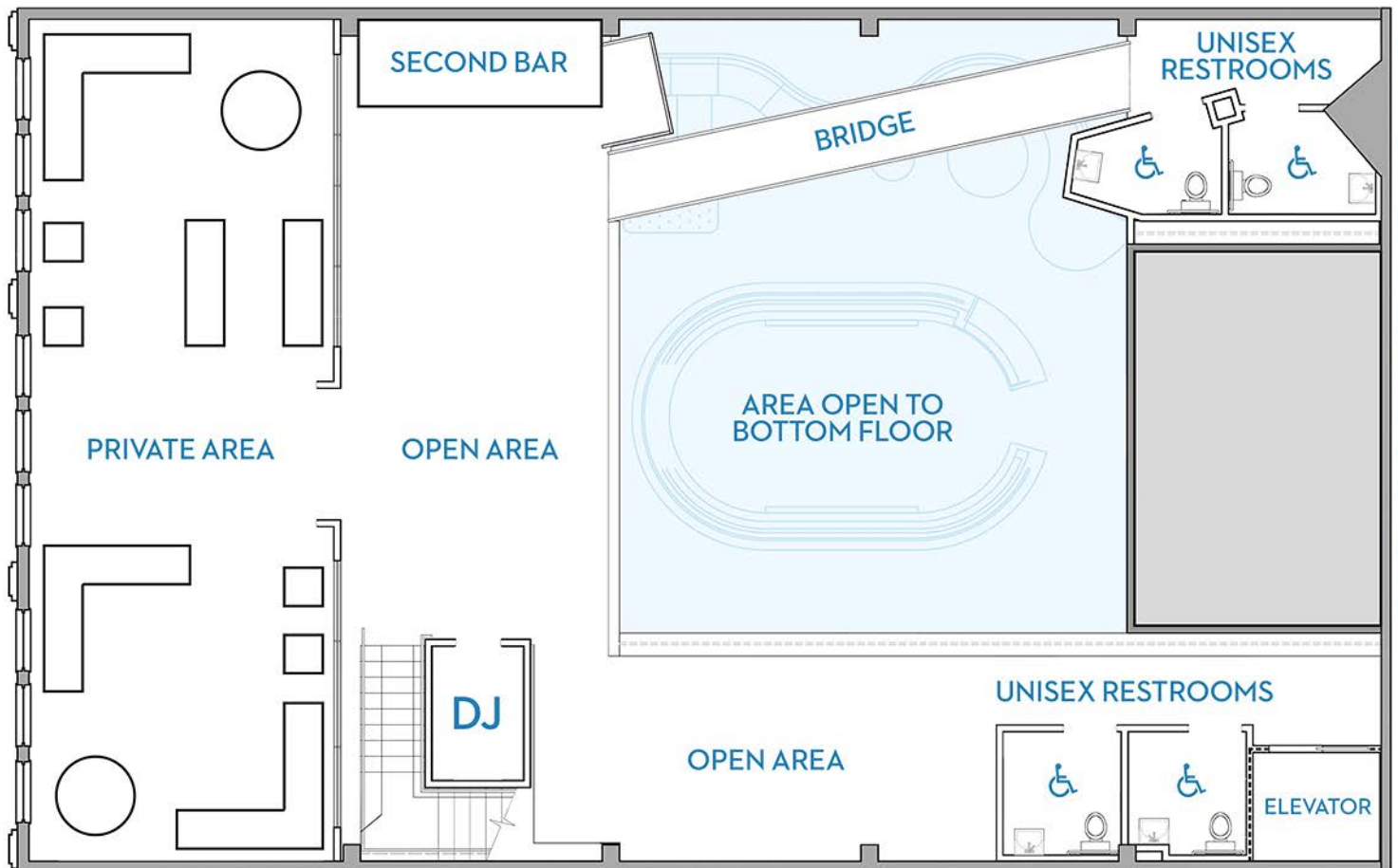
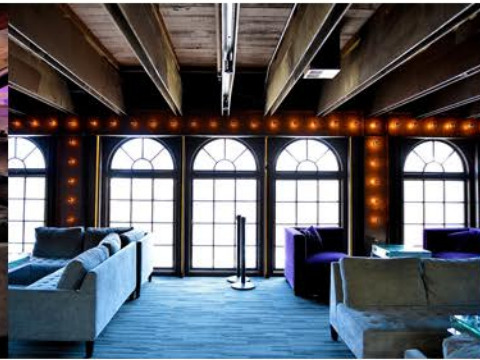
- 100-150 people capacity
- Magnificent 28-seat marble bar with Restoration Hardware barstools
- Plush custom seating running floor
- 3 handicap accessible unisex bathrooms
- Two full-service restaurant kitchens and walk-in refrigerator and freezer (one on each floor)
- Built-in photobooth with internet upload capability
- Gas-fired pizza oven and hot and cold stations
- Stairwell and elevator access to second floor
- DJ booth with two turntables



MEZZANINE LEVEL



- 75-150 people capacity
- Full-service, two well bars
- 3 handicap accessible, unisex bathrooms
- Two full service restaurant kitchens (one on each floor)
- Chrome light bulb feature wall
- Over \$20K in Z-Gallerie sectionals, armchairs, coffee and end tables
- Unique birdcage chandelier



FLOORPLAN: MEZZANINE LEVEL